

# 72 CELL POLYCRYSTALLINE SOLAR MODULE

1500V Series-315P | 320P | 325P | 330P | 335P | 340P



## KEY FEATURES



Designed for very High Area Efficiency, suited for roof-top and ground mounted applications.



Up to +5Wp Positive Power Tolerance.



Engineered to provide Excellent Low Light and Longer Wavelength Response.



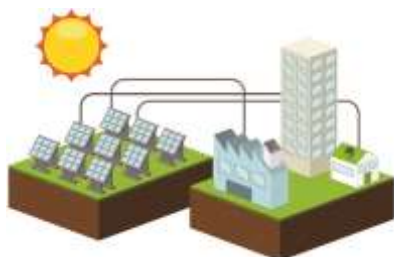
Extremely Reliable Product suited for all environment conditions.



Designed for high voltage system of upto 1500 VDC

## QUALITY AND SAFETY

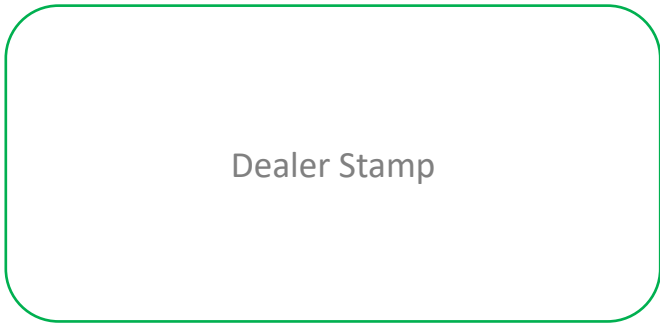
- ◆ 25 years of linear power output warranty\*\*
- ◆ Rigorous quality control meeting the highest international standards
- ◆ 100% EL tested to ensure micro crack free modules
- ◆ Certified for PID resistance
- ◆ Certified for salt mist corrosion resistance



**NEED MORE  
INFORMATION?**

## APPLICAITONS

- ◆ On-grid large scale utility systems
- ◆ On-grid rooftop residential & commercial systems
- ◆ Off-grid residential systems



Dealer Stamp

GreenBrilliance is committed to providing high quality solar products and solar system solutions to customers worldwide.

### Electrical Parameters at STC (AM 1.5, 1000 W/m<sup>2</sup>, 25°C)

Peak Power - Pmax (Wp)	315	320	325	330	335	340
Maximum Voltage - Vmpp (V)	37.50	37.70	37.80	38.00	38.10	38.2
Maximum Current - Impp (A)	8.40	8.50	8.60	8.70	8.80	8.91
Open Circuit Voltage - Voc (V)	45.80	46.00	46.20	46.30	46.50	46.80
Short Circuit Voltage - Isc (A)	8.92	9.03	9.13	9.24	9.35	9.43
Module Efficiency - η (%)	16.23	16.49	16.75	17.01	17.26	17.52

### Electrical Parameters at NOCT (800 W/m<sup>2</sup>, 20°C, wind speed 1 m/sec)

Power (Wp)	231.2	234.60	238.30	242.0	245.60	253.0
V at Pmax (V)	34.40	34.50	34.60	34.80	34.90	35.9
I at Pmax (A)	6.73	6.80	6.84	6.95	7.03	7.05
V <sub>oc</sub> (V)	42.50	42.60	42.65	42.70	42.80	44.00
I <sub>sc</sub> (A)	7.22	7.30	7.34	7.46	7.54	7.98

### Temperature Co-efficient (T<sub>c</sub>) & Permissible Operating Conditions

T <sub>c</sub> of Open Circuit Voltage (β)	- 0.341 %/°C
T <sub>c</sub> of Short Circuit Current (α)	0.050 %/°C
T <sub>c</sub> of Power (γ)	- 0.424 %/°C
Maximum System Voltage	1500 V
NOCT	45 +/- 2°C
Temperature Range	- 40°C to +85°C

### Mechanical Data

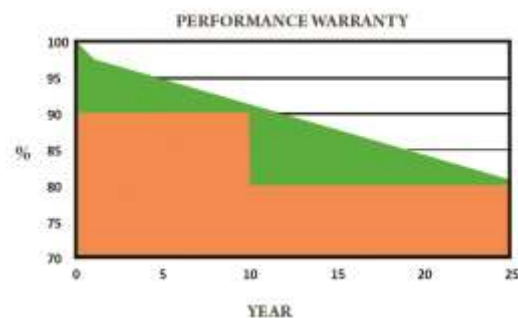
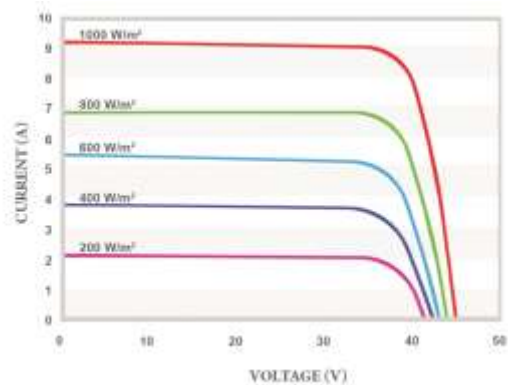
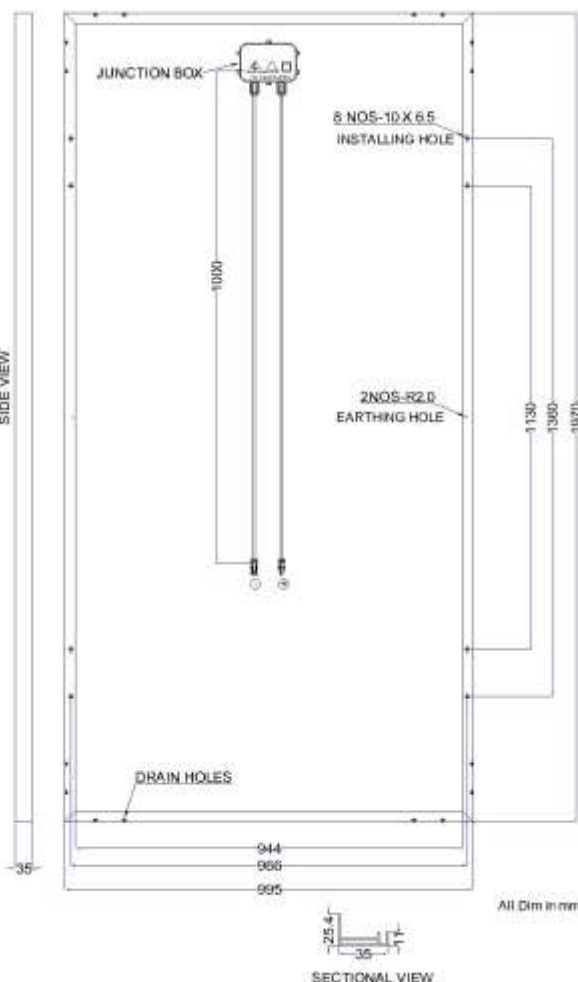
Length x Width x Height	1970 mm x 995 mm x 35 mm
Weight	22 Kgs
Junction Box	IP67, 3 bypass diodes
Cable & Connectors	1000 / 1200 mm length cables, MC4 connectors
Application Class	Class A (Safety Class II)
Superstrate	High transmission low iron tempered AR glass
Cells	72 poly crystalline solar cell
Cell Encapsulant	EVA (Ethylene Vinyl Acetate)
Back Sheet	Composite film
Frame	Anodized AL Frame with twin wall profile
Mechanical Load Test	Snow load upto 5400Pa/ Wind load upto 2400Pa
Maximum Series Fuse Rating	15A

### Packaging Information

Container	20' GP	40'GP	40'HC
Pallet (26 in 1) / Container	10	24	24 + 20 (2in1 Box)
Pieces / Container	260	624	664

### Warranty and Certifications

Product Warranty**	10 years
Performance Warranty**	Linear power warranty for 25 years with 2.5% for 1st year degradation and 0.75% from year 2 to year 25.
Approvals and Certifications	IEC 61215-2016*, IEC 61730-1&2*, IEC 61701*, IEC 62804*, IEC 62716*, UL-1703*, CE*



\*\* Refer to GreenBrilliance warranty document for terms and conditions. \*All(\*) certification under progress.

Caution: Read Safety and Installation Manual before using the product.

Specification included in this datasheet are subject to change without notice. Electrical data without guarantee.

Please confirm your exact requirement with company representative while placing your order.