

144 CELL MONOCRYSTALLINE SOLAR MODULE

Series-530M8 | 535M8 | 540M8 | 545M8 | 550M8



KEY FEATURES



Superior Price Performance of half-cell without much cost addition.



Bypass Diodes and innovative interconnection for better partial shadow performance.



Half cut cell reduces Hot spots.



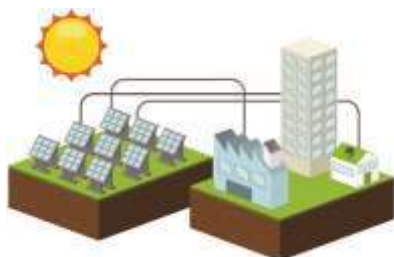
Split junction box for better heat dissipation.



Reduced power loss.

QUALITY AND SAFETY

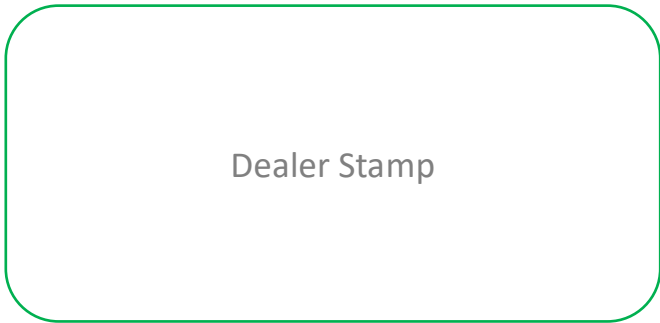
- ◆ 25 years of linear power output warranty**
- ◆ Rigorous quality control meeting the highest international standards
- ◆ 100% EL tested to ensure micro crack free modules
- ◆ Certified for PID resistance
- ◆ Certified for salt mist corrosion resistance



**NEED MORE
INFORMATION?**

APPLICAITONS

- ◆ On-grid large scale utility systems
- ◆ On-grid rooftop residential & commercial systems
- ◆ Off-grid residential systems



Dealer Stamp

GreenBrilliance is committed to providing high quality solar products and solar system solutions to customers worldwide.

Electrical Parameters at STC (AM 1.5, 1000 W/m², 25°C)

Peak Power - Pmax (Wp)	530	535	540	545	550
Maximum Voltage - Vmpp (V)	41.28	41.51	41.7	41.92	42.11
Maximum Current - Imp (A)	12.84	12.89	12.95	13	13.06
Open Circuit Voltage - Voc (V)	49.61	49.87	49.95	50.04	50.28
Short Circuit Voltage - Isc (A)	13.66	13.72	13.78	13.84	13.90
Module Efficiency - η (%)	20.5	20.7	20.9	21.1	21.3

Electrical Parameters at NOCT (800 W/m², 20°C, wind speed 1 m/sec)

Power (Wp)	407.16	411.01	414.85	418.69	422.53
V at Pmax (V)	37.62	37.83	38.01	38.21	38.39
I at Pmax (A)	10.82	10.86	10.91	10.96	11.01
V _{oc} (V)	45.8	46.04	46.12	46.2	46.42
I _{sc} (A)	11.58	11.63	11.68	11.73	11.78

Temperature Co-efficient (T_c) & Permissible Operating Conditions

T _c of Open Circuit Voltage (β)	- 0.266 %/°C
T _c of Short Circuit Current (α)	0.046 %/°C
T _c of Power (γ)	- 0.354 %/°C
Maximum System Voltage	1500 V
NOCT	45 +/- 2°C
Temperature Range	- 40°C to +85°C

Mechanical Data

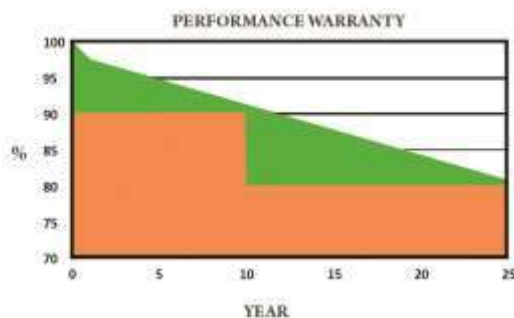
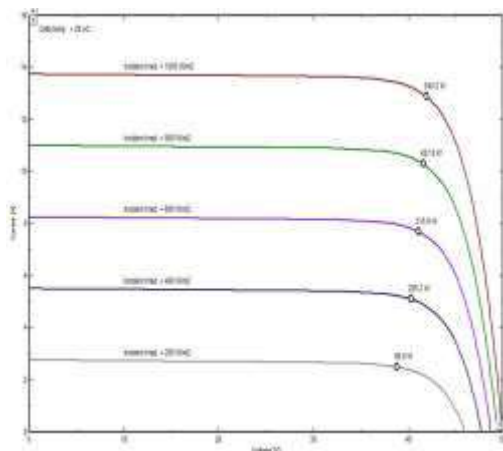
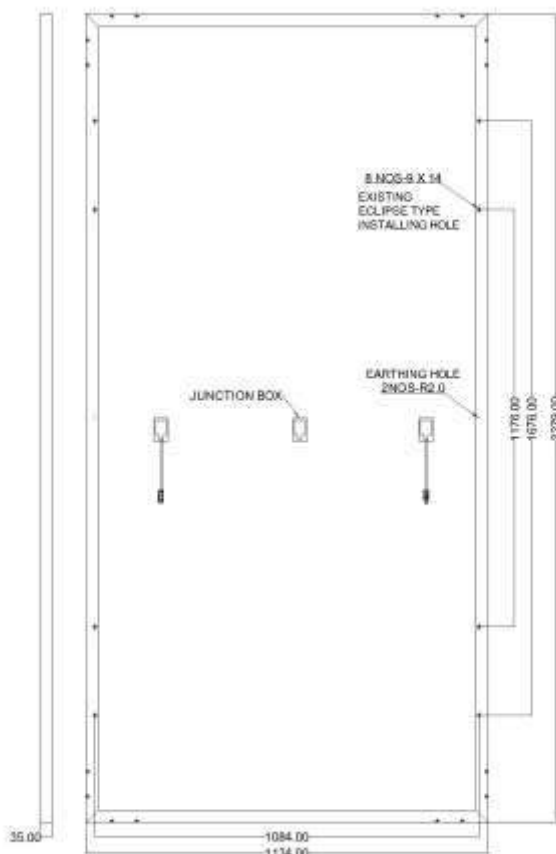
Length x Width x Height	2279 mm x 1134 mm x 35 mm
Weight	28.5 Kgs
Junction Box	IP68, 3 bypass diodes
Cable & Connectors	4 sqmm 300mm length
Application Class	Class A
Glass	High transmission low iron tempered AR glass
Cells	144 mono crystalline solar cell (24 x 6)
Cell Encapsulant	EVA (Ethylene Vinyl Acetate)
Back Sheet	Composite film
Frame	Anodized AL Frame (6065-T5)
Mechanical Load Test	Snow load upto 5400Pa/ Wind load upto 2400Pa
Maximum Series Fuse Rating	25A

Packaging Information

Container	40'HC
Pieces / Container	620

Warranty and Certifications

Product Warranty**	10 years
Performance Warranty**	Linear power warranty for 25 years with 2.5% for 1st year degradation and 0.75% from year 2 to year 25.
Approvals and Certifications	IEC 61215-2016*, IEC 61730-1&2*, IEC 61701*, IEC 62804*, IEC 62716*, UL-1703*, CE*



** Refer to GreenBrilliance warranty document for terms and conditions. *All(*) certification under progress.

Caution: Read Safety and Installation Manual before using the product.

Specification included in this datasheet are subject to change without notice. Electrical data without guarantee.

Please confirm your exact requirement with company representative while placing your order.